



Inside this issue:

CCSSE Results 1

Engagement In and Out of Class 1

Respondents by Credit Hours Earned at the College 2

Students Use of Academic Advising/Planning Services 2

Students Who asked Questions in Class 2

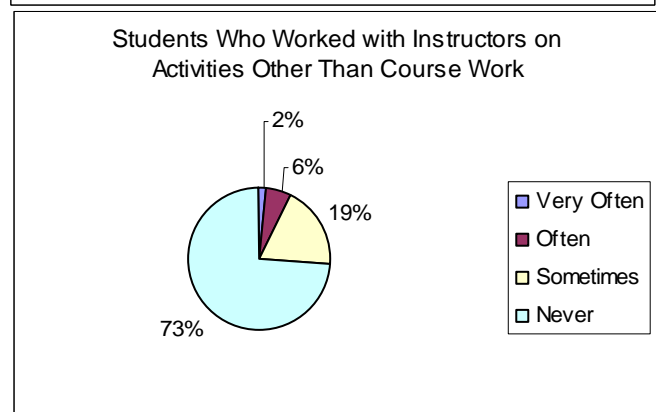
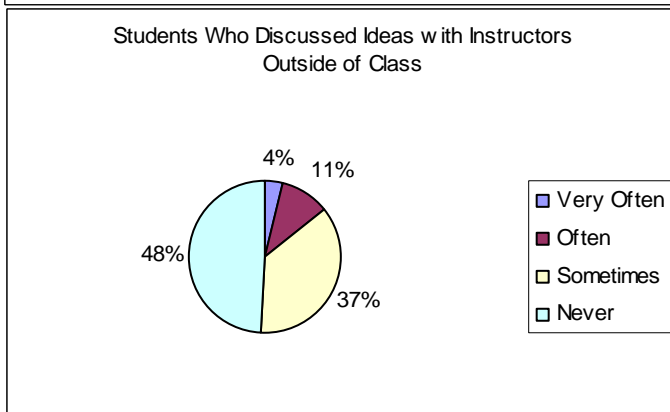
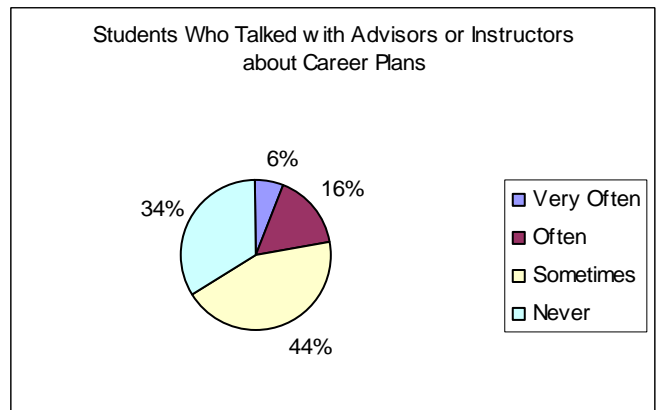
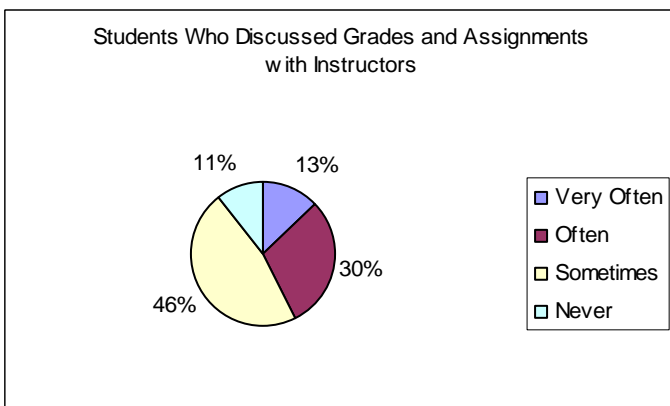
How Important are Goals? 2

The Office of Institutional Research (OIR)

During the spring semester, 2004, the OIR administered the Community College Survey of Student Engagement (CCSSE). With the assistance of faculty, we were able to get a return rate of over 70%. What do we do with the results? The OIR puts the results on our webpage <http://brazosport.edu/~ir/ccsse> for all to read, study, and use. I thought that it might be advantageous if some of the results were displayed in an abridged form with the hope that the data presented in this issue would pique one's interest to do a more thorough study of the entire report.



Engagement comes in a variety of flavors. Engagement may be students engaging faculty after class, students engaging other students of different religion, ethnicity, and age, and students engaging student services, such as counselors. This is what the survey is attempting to measure. The study shows some interesting results and I have selected just a few. The full report is at <http://www.brazosport.edu/~ir/ccsse/Fullreport.pdf>



### OIR Staff and Contact Information

David Preston, Ed. D., Director of Institutional Research and Coordinator of Title V

dpreston@brazosport.edu  
Ext. 3256

Jennifer Dudley, Administrative Office Specialist

jdudley@brazosport.edu  
Ext. 3407

#### What can we do for you?

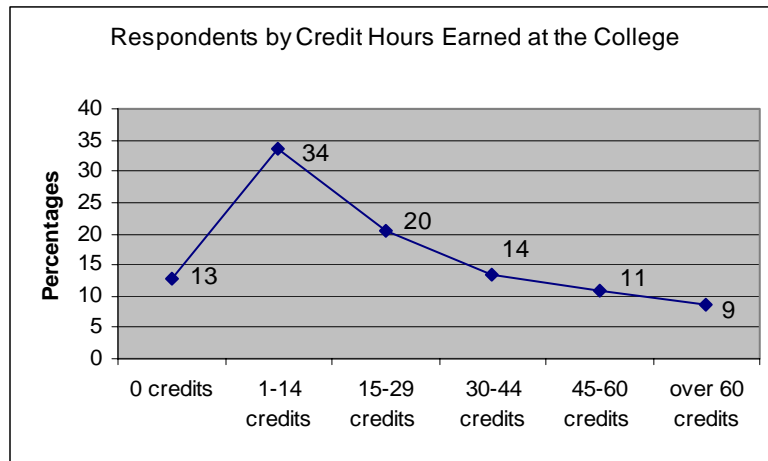
If you need our assistance to help design, construct, administer, or scan a survey or help in the analysis of the data collected by a survey, please feel free to call the OIR for assistance. If you would like to have the OIR produce a specialized study or report, please contact us. The OIR does and can help with writing grant proposals. Presenting the results of analysis to an internal or external group is also something the OIR is more than happy to do.

Got a question about statistics? Call the OIR or visit [www.brazosport.edu/~ir](http://www.brazosport.edu/~ir)

### How important are goals? From the CSSE National Study

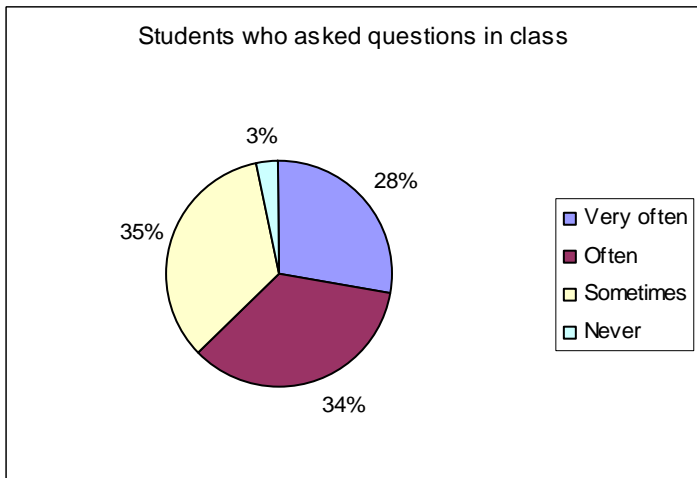
**More students aspire to earn degrees than actually do.** Only one-quarter of the students who entered a public two-year institution in 1995-1996 with the goal of earning a degree or certificate had attained a credential at that institution by 2001, six years later.

**More students aspire to transfer than actually do.** 53% of students cite transferring to a four-year college as a primary goal (an additional 21% name it as a secondary goal), but national data indicate that only about 25% of students actually do transfer.

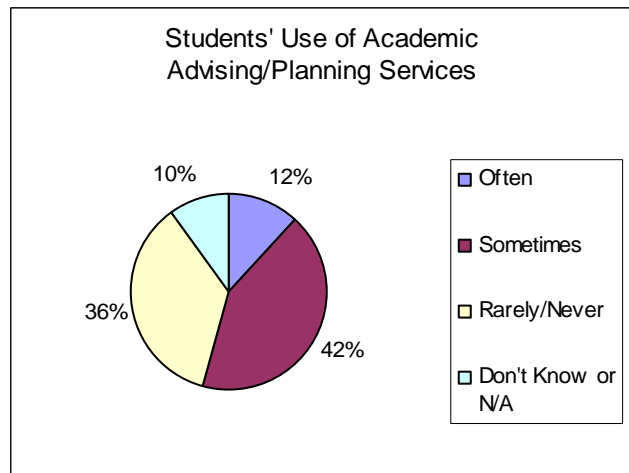


As always, if you would like information regarding something in which you are interested, let the OIR know.

We will be administering the CCSSE during the spring semesters of 2005 and 2006. With several years of data trends can be determined to show areas of improvement.



**In Future Issues** More from the CCSSE



#### Suggested Links:

<http://www.ecs.org/clearinghouse/53/09/5309.pdf>  
(a great read!)